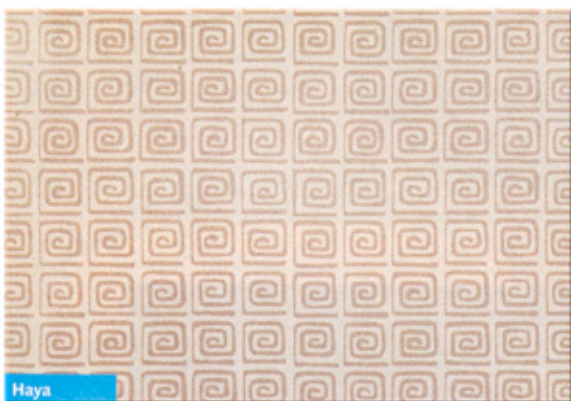
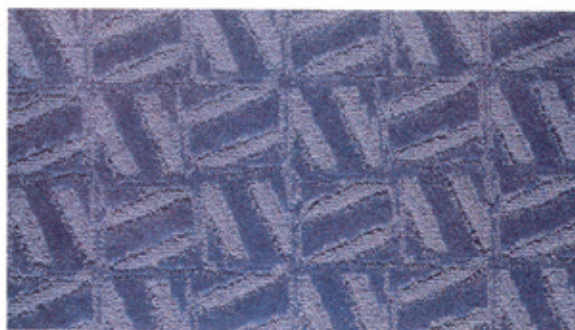


Known for decorative painting work in landmark edifices such as the Chrysler Building and Radio City Music Hall, EverGreene Painting Studios has branched out to wallcoverings. **Studio E**, the firm's new enterprise, markets wallpapers by fine artists. The latest collection features 4 styles, with 25 designs in 90 colors: Encaustic, based on ancient plaster and wax painting techniques; Natural Fibers, a design reminiscent of bark and cut wood; Metallic, an assemblage of silver-, gold-, platinum-, and copper-leafed papers; and Hand Printed (shown), which recalls stencil, block printing, and template painting. Featured are Suki (above right) and Haya (below right). All 4 styles are sold by the yard, in 30" wide, with coordinating color palettes. 212.244.2800



CLODAGH for LEES
 T [800] 523-5647
 F [336] 379-3397
 www.leescarpets.com
 CIRCLE 207

The **España Collection**, Clodagh's newest carpets for Lees, are inspired by the landscapes of southern Spain. Examples such as La Mancha (right) celebrate the visual richness of this country with motifs suggestive of its rustic architecture, vineyards, and cornfields. Designed to complement Clodagh's Celtic and Truth in Color collections, the 10 cut-and-loop carpets are available in 12' broadloom and 16 colors.



RICHARD SCHULTZ
 through DEL GRECO
 T [888] 343-7285
 F [212] 688-5207
 CIRCLE 208

The **2000 Café Collection**, by Richard Schultz, includes a sleek angled chair made of aluminum and steel that comes in four powdercoat colors or in a polished-aluminum finish (right). The stackable chair is sturdy and weighs only 10 lbs., which makes it an ideal alternative to traditional indoor or outdoor café and restaurant seating.

